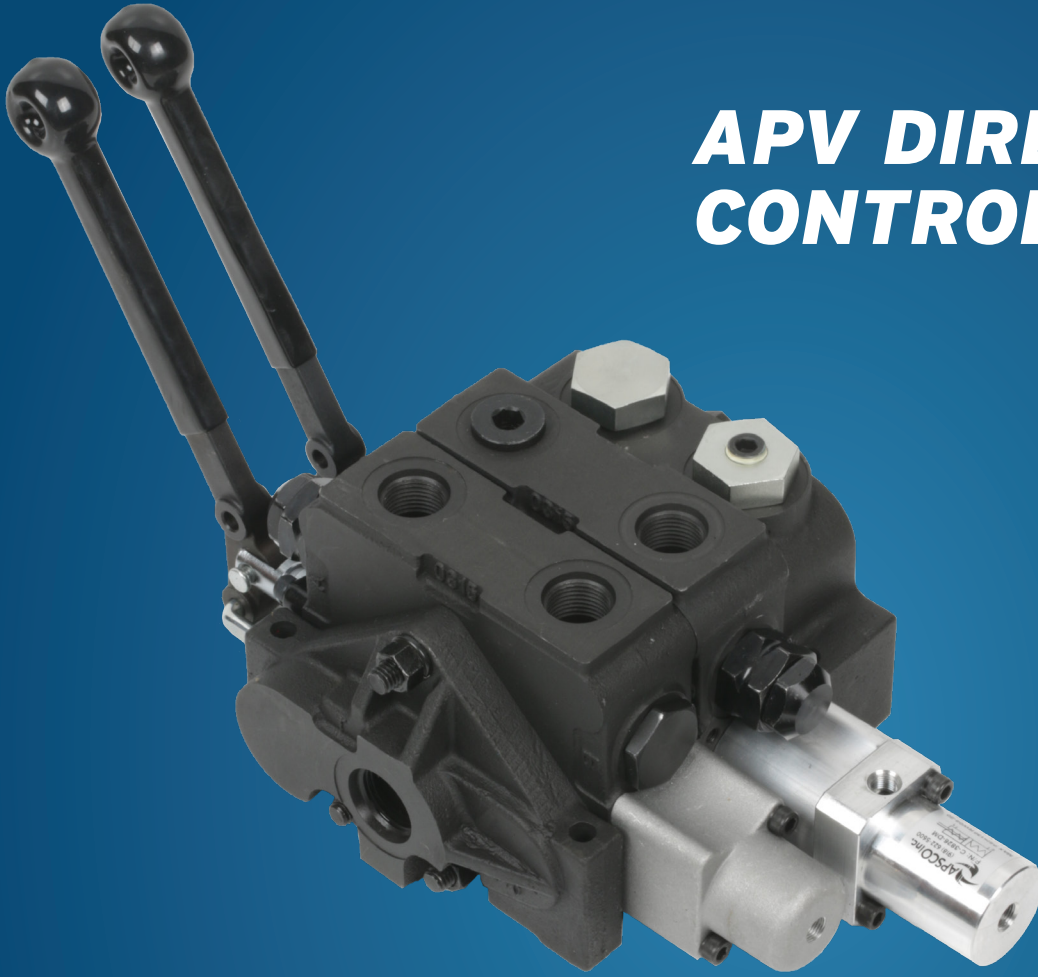


APV DIRECTIONAL CONTROL VALVE



APV DIRECTIONAL CONTROL VALVE

APSCO's APV 20 Series directional control valves are a sectional, directional control valve that is interchangeable with the very popular V20 series hydraulic valve product line. The APV valves can be used in parallel/open center circuit applications with manual, cable shift or pneumatic operation.

FEATURES:

- APV 20 Series - compact size and lightweight to fit your installation needs.
- Compacted graphite, high strength iron alloy for durability and shock load resistance.
- Precision machined spools with extra fine metering control and low spool forces.
- Available in SAE porting
- Stackable design to customize to your needs.
- Large variety of spool types and backcap options.
- Range of work port options including port reliefs, anti-cavitation valves, and power beyond capabilities
- Black phosphate finish for improved paint adhesion and reduction of surface rust.



CRANE



REFUSE



TOWING



SNOW & ICE

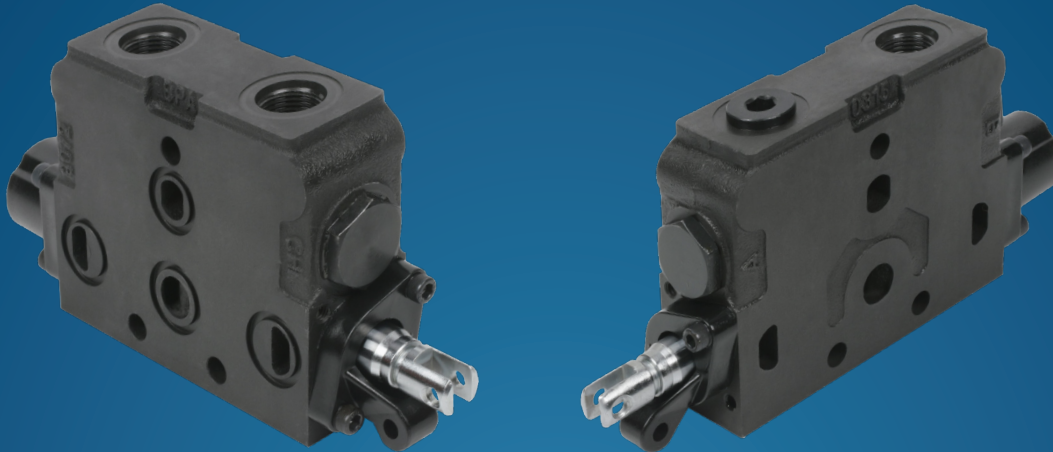


DUMP BODY

SEE OUR COMPLETE LINE AT APSCOPOWER.COM



APV DIRECTIONAL CONTROL VALVE



SPECIFICATIONS:

Design Type Sectional
 Circuit Open Center Design: Parallel,
 Capacity Capacity: Nominal Flow 25 GPM Maximum Flow 30 GPM
 Maximum System Pressure 3500 psi (242 Bar)
 Filtration 25 Micron
 Temperature -20°F to 180°F (-29°C to 82°C)
 Seal Type Buna-N standard, Optional Viton
 Main Relief Valves Screw Adjustable
 Port Relief Valves Shim Adjustable

Available in individual components or we can build you a custom engineered and tested valve assembly.



AIR ACTUATORS

C-3526-DM non-metering for APV-20
 C-3826-DM metering for APV-20



AIR CONTROLS

VM-7 single
 VM7-2B2020 2 BANK (2) 20 DEG
 VM7-3B20S20 3 BANK 20, STR, 20
 VM7-4B35202035 4 BANK 35,20,20,35
 VM7-5B3520S2035 .. 5 BANK 35, 20, STR, 20, 35

Sales (918) 622-5600 • Fax (918) 622-5469
 Email: sales@apscopower.com

