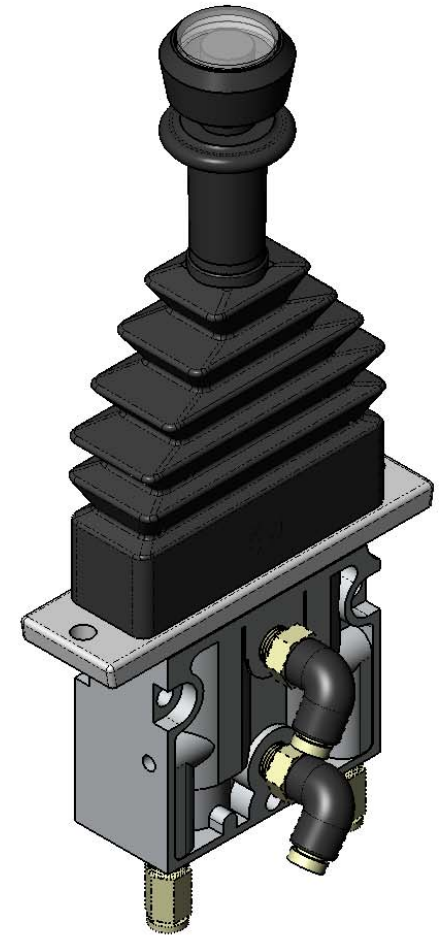
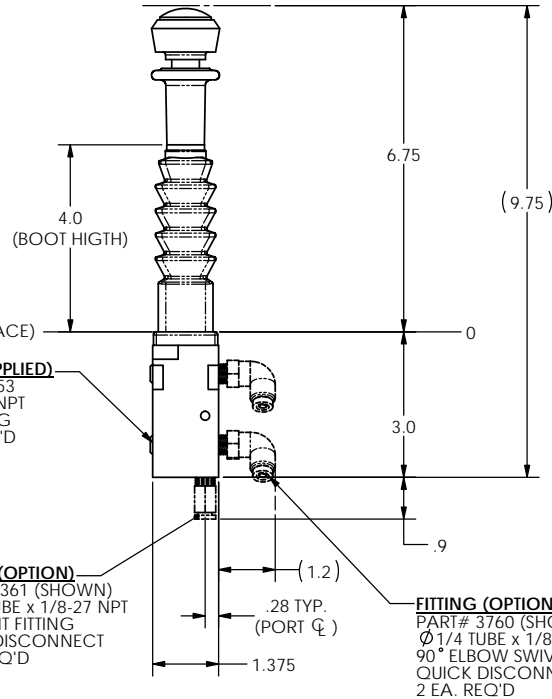
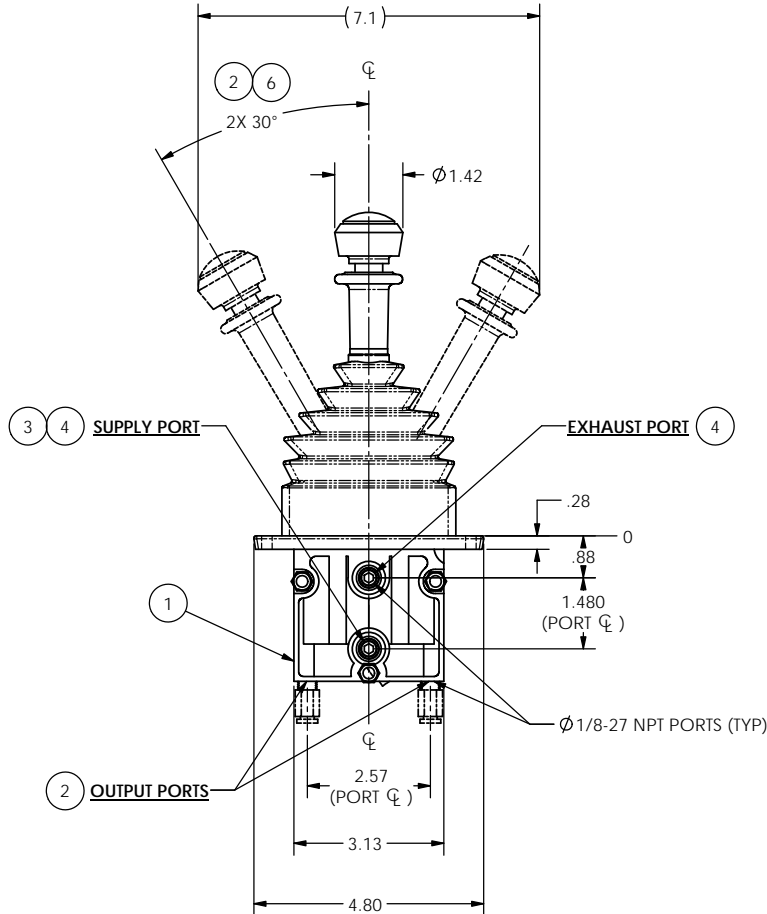
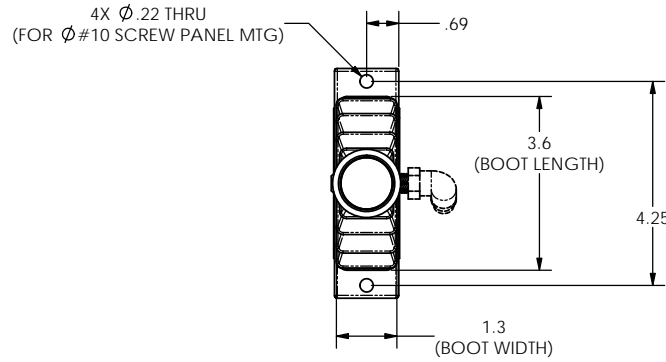


REVISIONS				
ECR	REV.	DESCRIPTION	DATE	APPROVED
E1936	-	REVISED TO NEW FORMAT	02/07/2013	JUMPER

**NOTE:**

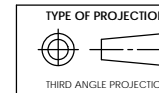
1. ALUMINIUM CAST BODY
2. FULLY PROPORTIONAL (0-100 PSI)
3. 150 PSI MAX SUPPLY
4. STACKABLE WITH ONE COMMON SUPPLY INLET & EXHAUST
5. REMOVABLE LENSE FOR LABELING
6. VARIOUS DETENT OPTIONS AVAILABLE
7. TEMPERATURE -20/200F



**PLUG (SUPPLIED)**  
PART# 1153  
Ø 1/8-27 NPT  
PORT PLUG  
2 EA. REQ'D

**FITTING (OPTION)**  
PART# 4361 (SHOWN)  
Ø 1/4 TUBE x 1/8-27 NPT  
STRAIGHT FITTING  
QUICK DISCONNECT  
2 EA. REQ'D

**FITTING (OPTION)**  
PART# 3760 (SHOWN)  
Ø 1/4 TUBE x 1/8-27 NPT  
90° ELBOW SWIVEL FITTING  
QUICK DISCONNECT  
2 EA. REQ'D



THIRD ANGLE PROJECTION

**PROPRIETARY AND CONFIDENTIAL**

THE INFORMATION CONTAINED IN THIS DRAWING IS THE SOLE PROPERTY OF APSCO Inc.. ANY REPRODUCTION IN PART OR AS A WHOLE WITHOUT WRITTEN PERMISSION OF APSCO Inc. IS PROHIBITED.

**DO NOT SCALE DRAWING**  
UNLESS OTHERWISE SPECIFIED  
DIMENSIONS ARE IN INCHES  
TOLERANCES ARE:  
DECIMALS  
X = ±0.03  
XX = ±0.10  
XXX = ±0.05  
FRACTION = ±0.015  
ANGLES = ±1/2°

**SURFACE TEXTURE OR BETTER**  
MATERIAL: N/A  
FINISH: N/A



TITLE: VM-8 STEEL DETENT RUBBER BOOT

DWG. NO. VM-8		REV. -
SIZE B	DRAWN JUMPER	DATE 02/07/2013
F/N: VM-7,8,9		CLASS 8