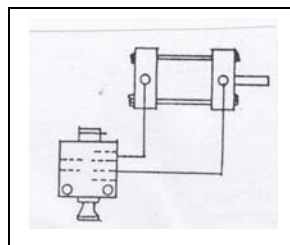
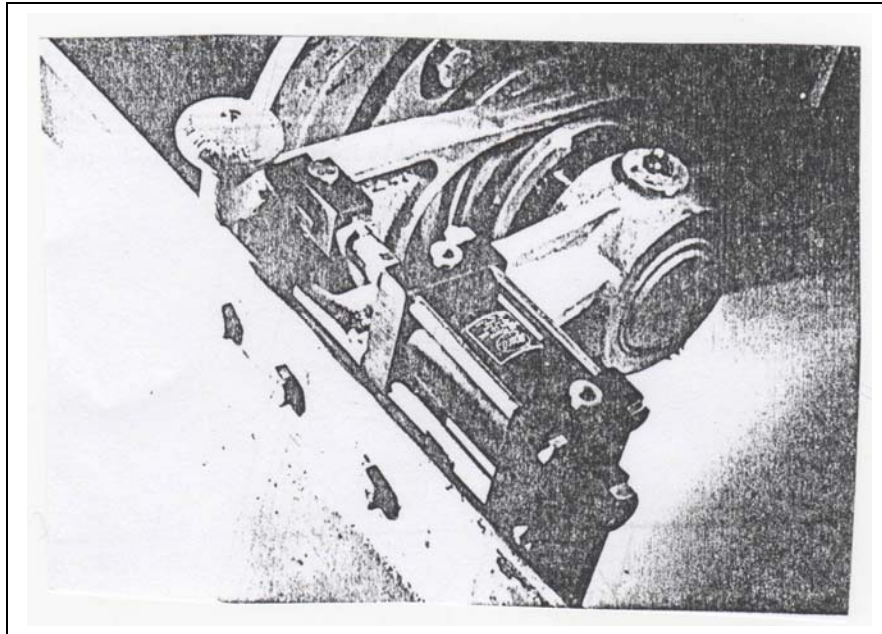


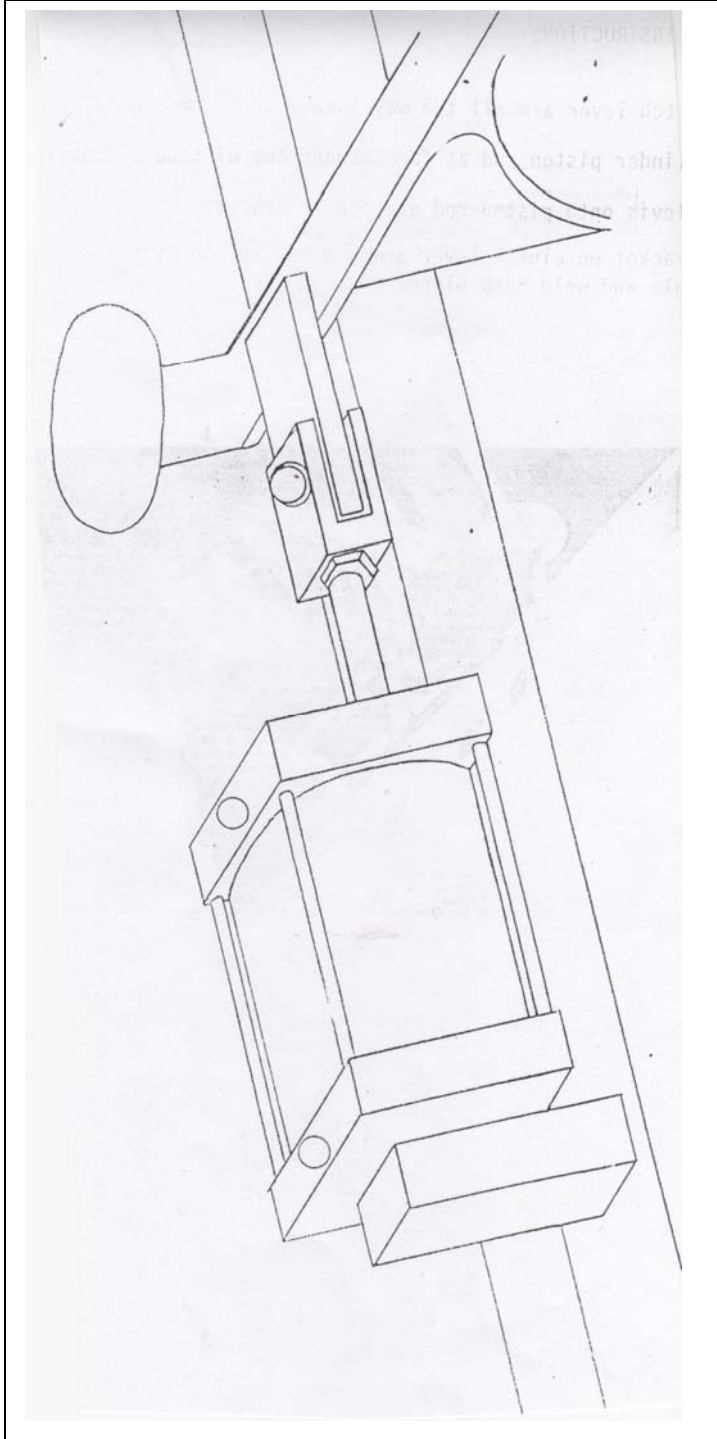
**Installation Instructions
for
APSCO WBR-U-12 Control Kit**

1. Push clutch lever arm all the way forward.
2. Pull cylinder piston rod as far forward out of tube as possible.
3. Screw clevis onto piston rod and pin to bracket.
4. Align bracket on clutch lever arm and bracket on cylinder on the base angle and weld into place.



Air Power Systems Co., Inc
P.O. Box 470948
Tulsa, OK 74147
(918)622-5600

WBR-U-12_.DOC
Date: 7-7-05
Status: Approved
Responsible: Ken Thompson



Air Power Systems Co., Inc
P.O. Box 470948
Tulsa, OK 74147
(918)622-5600

WBR-U-12_.DOC
Date: 7-7-05
Status: Approved
Responsible: Ken Thompson