

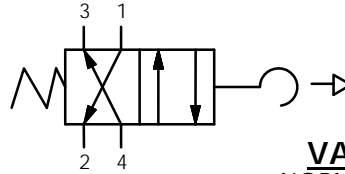
SPECIFICATIONS:

VALVE TYPE
 NUMBER OF PORTS
 VALVE OPERATOR
 OPERATING RANGE
 VALVE PRE LOAD
 VALVE WORKING LOAD

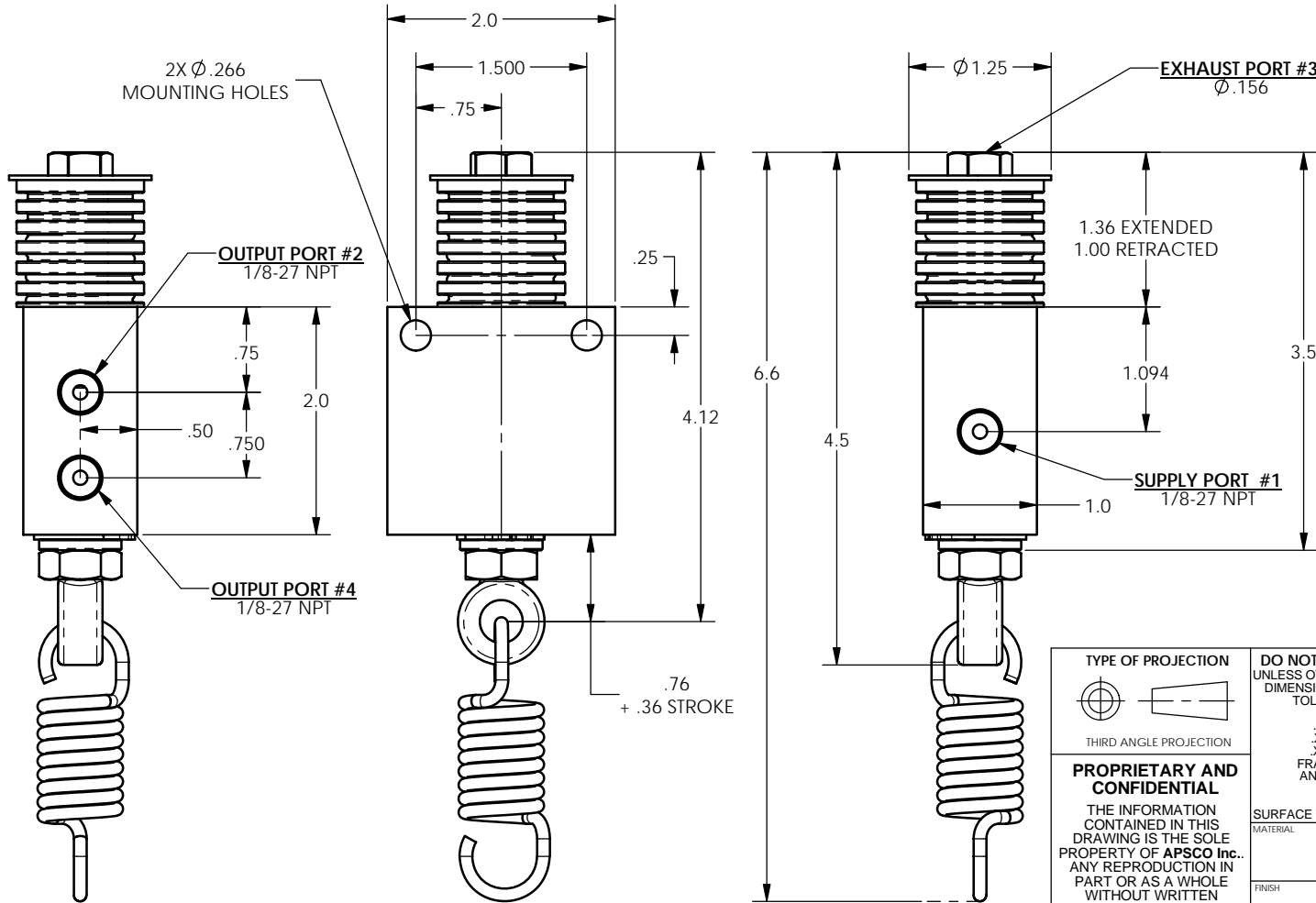
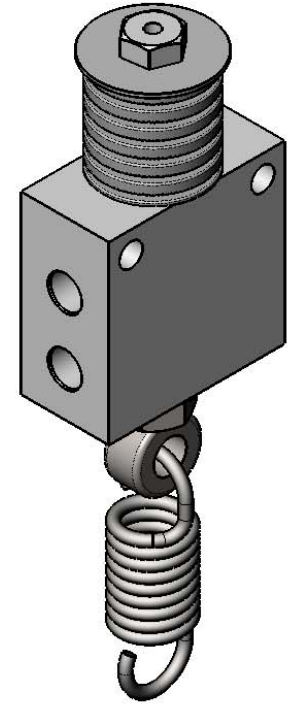
PULL/SPRING RETURN, 4 WAY, 2 POSITION
 4
 PULL/SPRING RETURN
 0-150 PSI
 20.5 LBS
 29.5 LBS

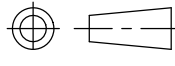

REVISIONS

ECR	REV.	DESCRIPTION	DATE	CHG BY
E2390	-	NEW RELEASE	1/14/2014	JUMPER



VALVE SCHEMATIC
 NORMALLY OPEN TO PORT #2



TYPE OF PROJECTION  THIRD ANGLE PROJECTION	DO NOT SCALE DRAWING UNLESS OTHERWISE SPECIFIED DIMENSIONS ARE IN INCHES TOLERANCES ARE: DECIMALS .X = ±.03 .XX = ±.010 .XXX = ±.005 FRACTION = ±.015 ANGLES = ±1/2°	 8178 EAST 44TH STREET TULSA, OK 74145
PROPRIETARY AND CONFIDENTIAL THE INFORMATION CONTAINED IN THIS DRAWING IS THE SOLE PROPERTY OF APSCO Inc.. ANY REPRODUCTION IN PART OR AS A WHOLE WITHOUT WRITTEN PERMISSION OF APSCO Inc. IS PROHIBITED.	SURFACE TEXTURE OR BETTER MATERIAL N/A FINISH N/A	
TITLE: VALVE, PULL/ SPRING RETURN, 4-WAY, 2 POS, LIMIT		DWG. NO. V-8-B
SIZE B		
DRAWN JUMPER		REV -
DATE 01/08/2014		CLASS
F/N: V-8		SHT. 1 OF 1