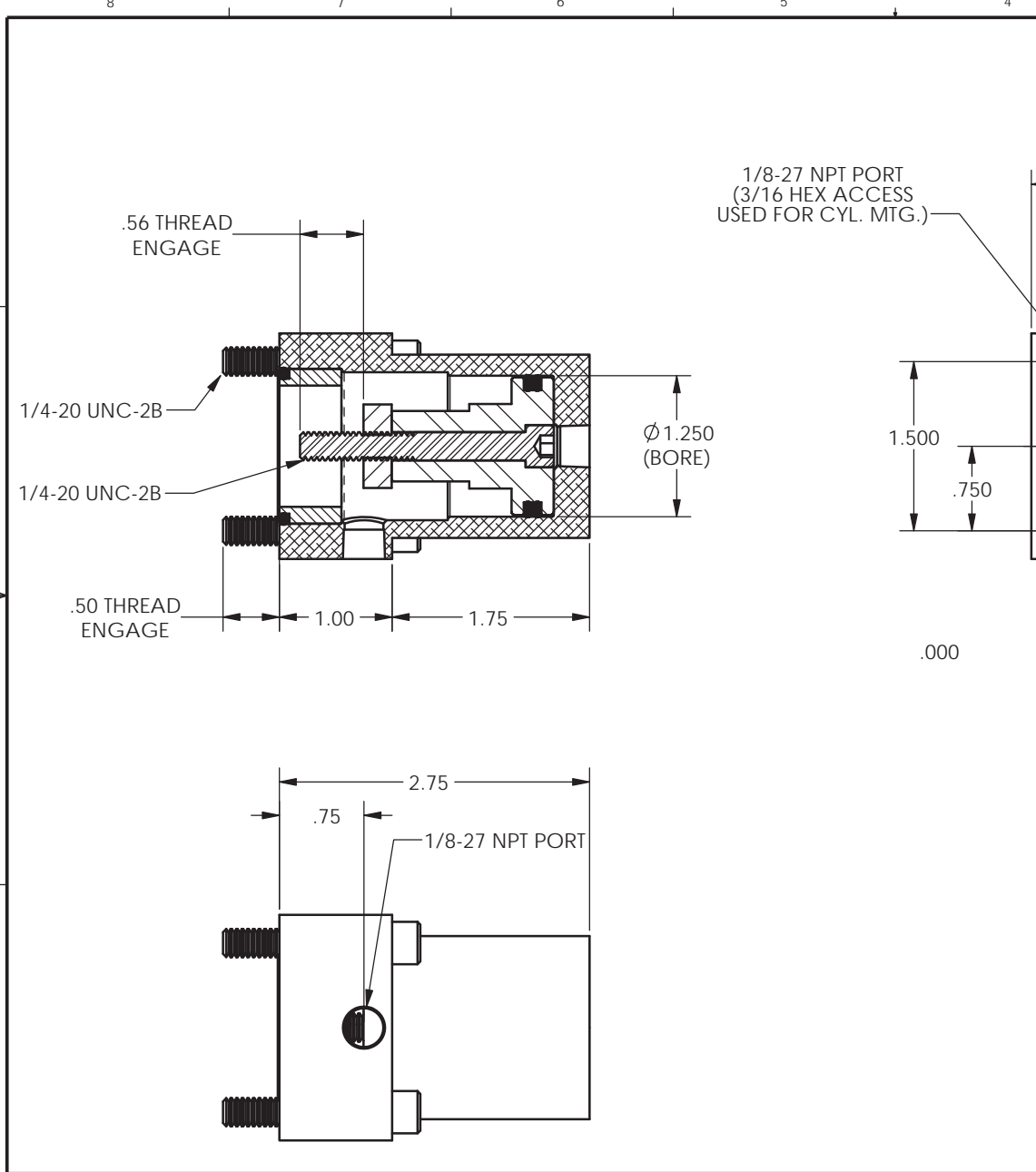
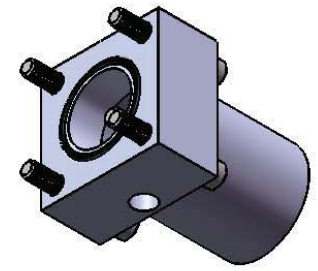
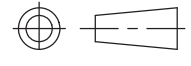



REVISIONS				
ECR	REV	DESCRIPTION	DATE	APPROVED
E2357	B	See Sheet1	11/19/2013	JUMPER



1/8-27 NPT PORT
(3/16 HEX ACCESS
USED FOR CYL. MTG.)



TYPE OF PROJECTION  THIRD ANGLE PROJECTION	DO NOT SCALE DRAWING UNLESS OTHERWISE SPECIFIED DIMENSIONS ARE IN INCHES TOLERANCES ARE: DECIMALS .X = ±.03 .XX = ±.010 .XXX = ±.005 FRACTION = ±.015 ANGLES = ±1/2°	 8178 EAST 44TH STREET TULSA, OK 74145		
		PROPRIETARY AND CONFIDENTIAL THE INFORMATION CONTAINED IN THIS DRAWING IS THE SOLE PROPERTY OF APSCO Inc.. ANY REPRODUCTION IN PART OR AS A WHOLE WITHOUT WRITTEN PERMISSION OF APSCO Inc. IS PROHIBITED.	SURFACE TEXTURE OR BETTER MATERIAL N/A	DWG. NO. C-3552-DM
FINISH N/A	SIZE B	DRAWN JUMPER	DATE 08/21/2012	CLASS CYL
F/N:C-3000 SERIES			SHT. 2 OF 2	