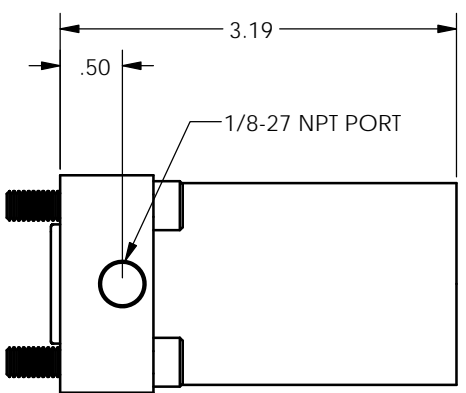
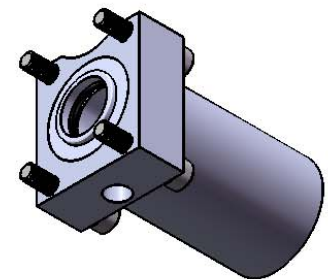
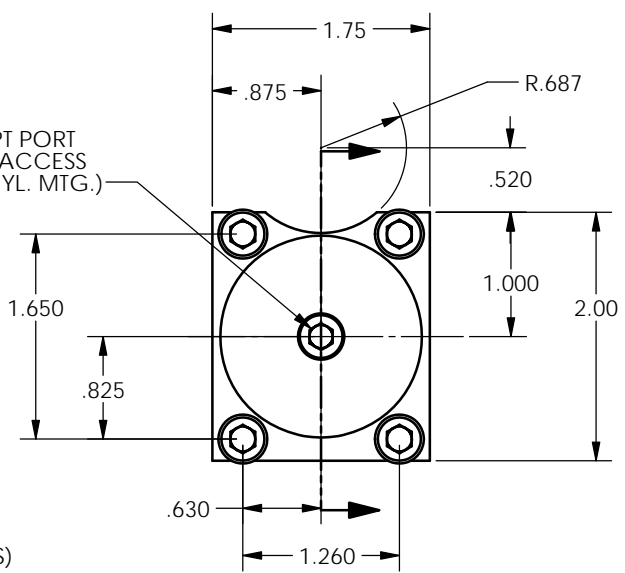
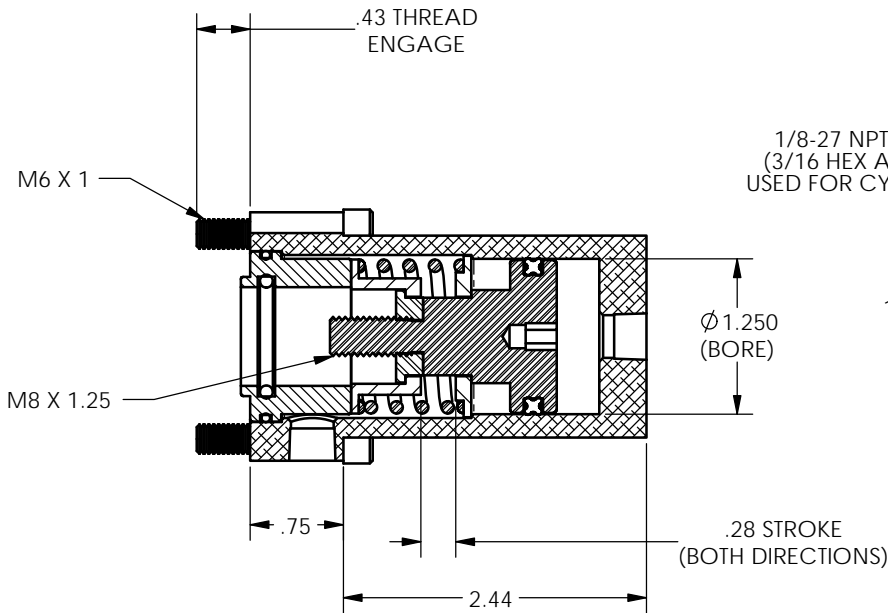
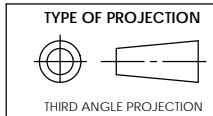


8 7 6 5 4 3 2 1

REVISIONS				
ECR	REV	DESCRIPTION	DATE	APPROVED
E2091	B	See Sheet1	03/26/2013	JUMPER



1. NEUTRAL POSITION SHOWN
2. SPRING PRELOAD = 32.3LBS
3. MIN. EXTENSION FORCE @ 100 PSI AT FULL STROKE = 80 LBS
4. MIN. RETRACT FORCE @ 100 PSI AT FULL STROKE = 50 LBS



PROPRIETARY AND CONFIDENTIAL

THE INFORMATION CONTAINED IN THIS DRAWING IS THE SOLE PROPERTY OF APSCO Inc.. ANY REPRODUCTION IN PART OR AS A WHOLE WITHOUT WRITTEN PERMISSION OF APSCO Inc. IS PROHIBITED.

DO NOT SCALE DRAWING
UNLESS OTHERWISE SPECIFIED DIMENSIONS ARE IN INCHES

TOLERANCES ARE:
DECIMALS
.X = ±.03
.XX = ±.010
.XXX = ±.005
FRACTION = ±.015
ANGLES = ±1/2°

✓
SURFACE TEXTURE OR BETTER
MATERIAL N/A
FINISH N/A



TITLE: AIR ACT HYD VAL			
DWG. NO. C-3516-DM		REV B	
SIZE B	DRAWN LC	DATE 11/03/2010	CLASS CYL
F/N:C-3000 SERIES			SHT. 2 OF 2

8 7 6 5 4 3 2 1