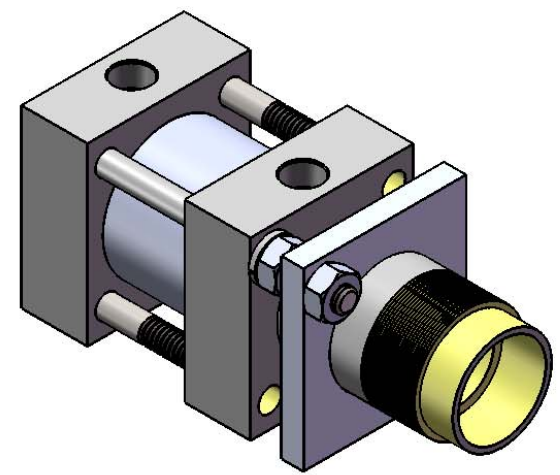
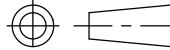



REVISIONS				
ECR	REV.	DESCRIPTION	DATE	CHG BY
E2770	-	See Sheet1	05/19/2015	RR



NOTES:
 BORE= ϕ 1.25
 STROKE= .6
 RETRACTED END TO END OF ROD= 3.1
 EXTENDED END TO END OF ROD= 3.7
 EXTENSION FORCE @100PSI= 123 LBS
 RETRACTED FORCE @ 100PSI=103 LBS

ASSEMBLY DO NOT SCALE DRAWING UNLESS OTHERWISE SPECIFIED DIMENSIONS ARE IN INCHES TOLERANCES ARE: .X = \pm .06 .XX = \pm .03 .XXX = \pm .010 ANGLES = \pm 2° SURFACE TEXTURE OR BETTER  THIRD ANGLE PROJECTION SHEET SIZE B	PROPRIETARY AND CONFIDENTIAL THE INFORMATION CONTAINED IN THIS DRAWING IS THE SOLE PROPERTY OF APSCO Inc.. ANY REPRODUCTION IN PART OR AS A WHOLE WITHOUT WRITTEN PERMISSION OF APSCO Inc. IS PROHIBITED.		TITLE: CYL 1 1/4-12 HW-6 KIT BR	
	DRAWN RR	DATE 05/19/2015	DWG. NO. C-2533	
	CHECKED FP	DATE 05/20/2015	MATERIAL N/A	FINISH N/A
	APPROVED FH	DATE 05/20/2015		
FINAL FH	DATE 05/20/2015	F/N: C-2533		REV -
			SHT. 2 OF 2	