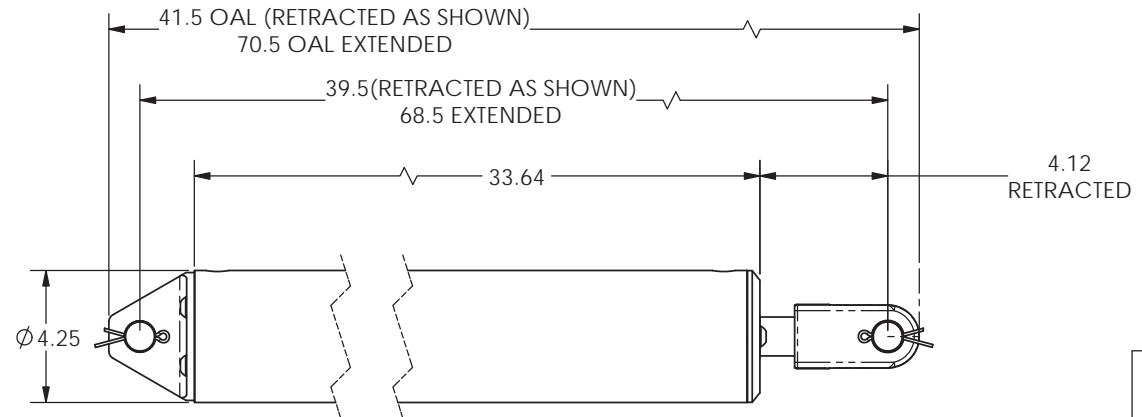
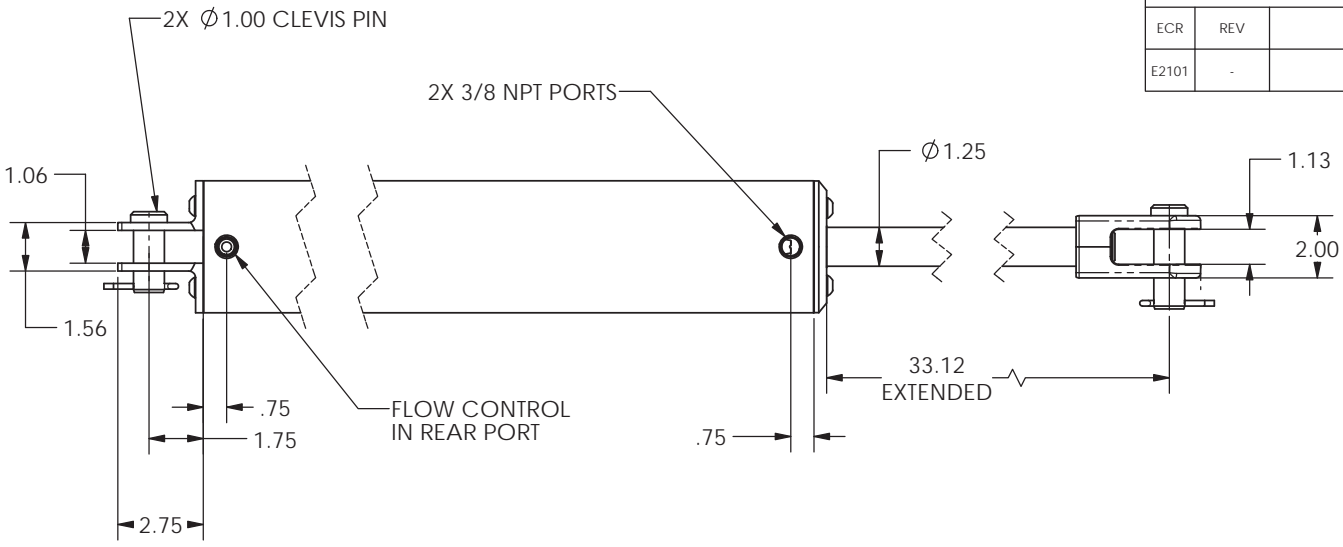


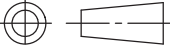

8 7 6 5 4 3 2 1

REVISIONS				
ECR	REV	DESCRIPTION	DATE	APPROVED
E2101	-	See Sheet1	04/05/2013	JUMPER



NOTES:  
 BORE: Ø4.0"  
 STROKE: 29"  
 PIN TO PIN: 39.50 RETRACTED  
 PIN TO PIN: 68.50 EXTENDED  
 EXTENDED FORCE @ 100 PSI: 1257 LBS  
 RETRACT FORCE @ 100 PSI: 1134 LBS

**PORTS ON TOP**

TYPE OF PROJECTION  THIRD ANGLE PROJECTION	DO NOT SCALE DRAWING UNLESS OTHERWISE SPECIFIED DIMENSIONS ARE IN INCHES TOLERANCES ARE: DECIMALS X = ±.03 .XX = ±.010 .XXX = ±.005 FRACTION = ±.015 ANGLES = ±1/2°	 8178 EAST 44TH STREET TULSA, OK 74145	
		TITLE: CYLINDER 4" X 29", FLOW CONTROL, PIN KIT	
<b>PROPRIETARY AND CONFIDENTIAL</b> THE INFORMATION CONTAINED IN THIS DRAWING IS THE SOLE PROPERTY OF APSCO Inc.. ANY REPRODUCTION IN PART OR AS A WHOLE WITHOUT WRITTEN PERMISSION OF APSCO Inc. IS PROHIBITED.	SURFACE TEXTURE OR BETTER MATERIAL N/A	DWG. NO. <b>C-0429-FC-PK-1</b>	REV -
	FINISH N/A	SIZE <b>B</b> DRAWN JUMPER DATE 04/05/2013 CLASS CYL	F/N: C-0400 SERIES SHEET 2 OF 2

8 7 6 5 4 3 2 1